

Connect the SecuGen Parallel Fingerprint Reader to PC

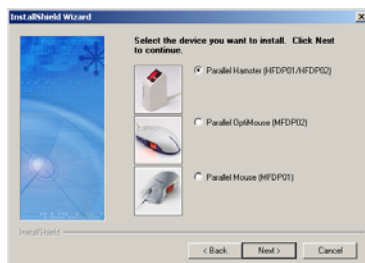
- 1 Set the parallel port mode in your BIOS configuration to EPP (recommended). If your computer has problems operating devices in EPP mode, try ECP mode. Turn off the computer.
- 2 Connect the PS/2 connector to the PS/2 mouse (or keyboard) port.
- 3 Connect the parallel port adapter to the parallel (printer) port.
- 4 Turn on the computer. Proceed with driver installation (below).

Install Drivers using the SecuGenDriverInstall Program

- 1 Connect the fingerprint reader to the PC (see above and right).
- 2 Insert driver CD or download driver file, and run **setup.exe**.
- 3 Click on **Parallel Driver**, and follow instructions on the screen.



- 3 Select the fingerprint reader you are installing.

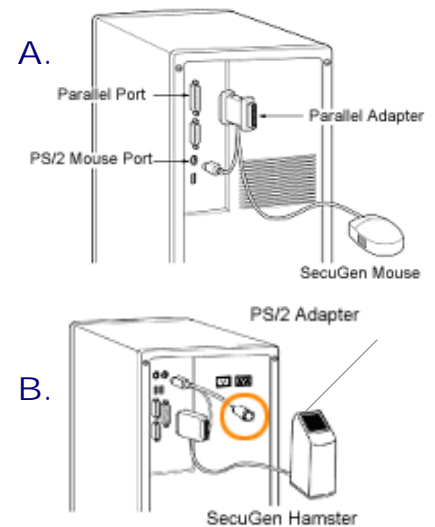


- 4 Follow the instructions on the screen to complete installation.
- 5 Check the **Device Diagnostic Utility** box to practice capturing fingerprints and to optimize the brightness settings of the reader for optimal performance. To run this utility later, go to **Program Files > SecuGen** and run **SGDX.exe**.

For Best Results when Reading a Fingerprint



1. Place the pad (NOT the tip) of your finger so that it covers the sensor window completely.
2. Don't use too much pressure. Apply only as much pressure as you would need to hold a piece of paper between fingers.



Troubleshooting Tips

Device not found or initialized

Parallel Port Modes can vary for different PCs, and it's important to select the correct parallel port mode. The EPP (Enhanced Parallel Port) mode is recommended for all SecuGen parallel readers. Please refer to your PC's owner manual for instructions on checking or changing these settings, usually found in the I/O device section of your BIOS configuration. (SecuGen parallel readers can use either 378h or 278h standard addresses).

How do I connect other devices?

Printers and other devices can plug directly into the back of SecuGen's pass-through parallel adapter to share the port (Fig. A). The parallel Hamster has a Y-type PS/2 extension so that you can plug in your mouse or keyboard after installing the Hamster (Fig. B).

I've lost my driver CD

Device drivers can be downloaded from our website at www.secugen.com/download.

I need more help

Please visit the support page on our website at www.secugen.com/support. From there, you can download the document **SecuGen Fingerprint Reader User Guide** for full installation instructions, usage and troubleshooting advice.